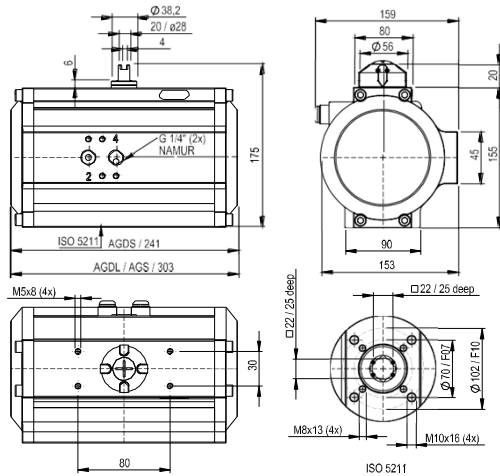
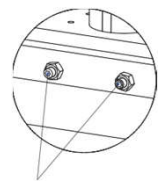


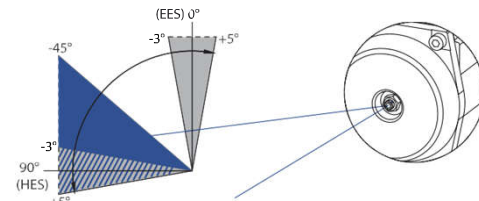
AGDL-AGDS/AGS-055



End position adjustment



Adjusting screws, between +5° and -3°



Optional: Stroke Limitation caps between +5° and -45° for the actuator sizes AGD/AGS-004-600.

The pivoting angle can be adjusted in both end positions in pressure free conditions between +5° and -3°.

Torque-table double-acting actuator (Nm)

	Control Pressure Pst (bar)										
	2	2.5	3	3.5	4	4.5	5	5.5	6	7	8
AGD - 055	117.8	147.2	176.6	206.1	235.5	265.0	294.4	323.8	353.3	412.2	471.0

Torque-table single-acting actuator (Nm)

Actuator Type	No. of Springs	Md F (Nm)		Pneumatic Applied Torque Md (Nm) at Minimum Control Pressure Pst (bar)																				
				2		2.5		3		3.5		4		4.5		5		5.5		6		7		
		min	max	min	max	min	max	min	max	min	max	min	max	min	max	min	max	min	max	min	max	min	max	
AGS 055	4	47.90	71.70	46	70	76	99																	
	5	59.88	89.63	28	58	58	87	87	117															
	6	71.85	107.55			40	75	69	105	99	134													
	7	83.83	125.48					51	93	81	122	110	152											
	8	95.80	143.40							63	110	92	140	122	169									
	9	107.78	161.33									74	128	104	157	133	187							
	10	119.75	179.25											86	145	115	175	145	204					
	11	131.73	197.18													97	163	127	192	156	222			
	12	143.70	215.10															109	180	138	210	197	268	

Technical developments & alterations are reserved. 04/2022 GM APE Automation (India) Pvt. Ltd.



Control pressure

Control pressure: 2 - 8 bar
Control medium/ quality: Filtered air minimum acc. to DIN/ISO 8573-1 Class 4

Weight, air consumption

Actuator type	AGDL	AGDS	AGS
Weight (kg)	8.50	8.10	9.90
Volume (l) Double-stroke	2.90	2.70	1.40

Switch time (sec*)

AGDL	AGDS	AGS	
		0 - 90°	90 - 0°
1.5	1.3	1.2	1.1

*Quoted switch times are guidelines for a double-stroke at 5 bar control pressure and at 50% rated loading. With high valve actuating speeds, potentially dangerous large braking forces can arise in the actuator end positions. Tip: Throttle the exhaust air or select a larger actuator. Single Action actuators with 12 springs.

Ambient temperature

Standard	- 35°C to +80°C
High-temp (HT)	- 15°C to +140°C
Low-temp (TT)	- 50°C to +70°C

Optional extras

- Other housing coatings
- Pinion: Stainless Steel AISI 304 or 316
- 180° actuator: rotation 180° to 120° adjustable
- 3 - position actuator: 0° - 90° - 180° / 0° - 45° - 90°

Materials

- Housing: Al-alloy, anodised
- Caps: Al-alloy, PP-coated
- Piston: Al-alloy
- Pinion: Al-alloy, hard-anodised
- Namur shaft: SS304
- Seals: NBR (Perbunan)
- Bearing: Plastic, POM
- Screws: Stainless steel 1.4301

Ordering code

AGD - 055 / 090 - V17 - H (see assembly variants)
AGS - 055 / 090 - 06* - V17 - H (see assembly variants)
*The number of springs (4 up to 12pcs.) must be matched to the control pressure beforehand

Technical developments & alterations are reserved. 04/2022 GM APE Automation (India) Pvt. Ltd.