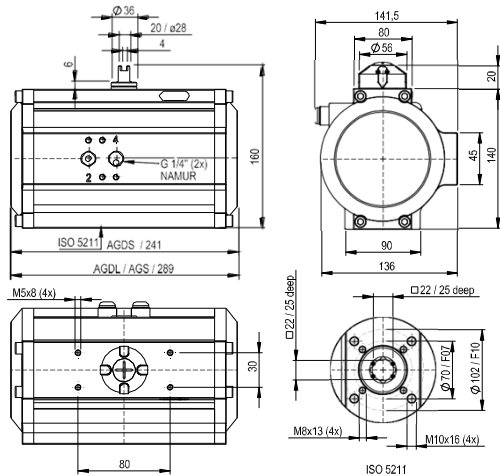
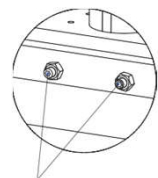


AGDL-AGDS/AGS-045

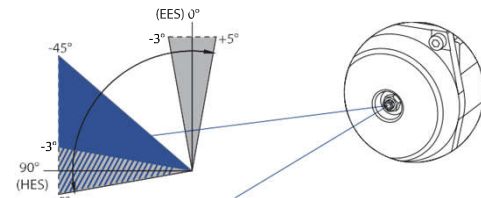


Technical developments & alterations are reserved. 04/2022 GM APE Automation (India) Pvt. Ltd.

End position adjustment



Adjusting screws, between +5° and -3°



Optional: Stroke Limitation caps between +5° and -45° for the actuator sizes AGD/AGS-004-600.

The pivoting angle can be adjusted in both end positions in pressure free conditions between +5° and -3°.

Torque-table double-acting actuator (Nm)

	Control Pressure Pst (bar)										
	2	2.5	3	3.5	4	4.5	5	5.5	6	7	8
AGDL - 045	90.6	113.2	135.9	158.5	181.2	203.8	226.5	249.1	271.7	317.0	362.3
AGDS - 045											

Torque-table single-acting actuator (Nm)

Actuator Type	No. of Springs	Md F (Nm)		Pneumatic Applied Torque Md (Nm) at Minimum Control Pressure Pst (bar)																				
				2		2.5		3		3.5		4		4.5		5		5.5		6		7		
		min	max	min	max	min	max	min	max	min	max	min	max	min	max	min	max	min	max	min	max	min	max	
AGS 045	4	35.00	54.40	36	56	59	78																	
	5	43.75	68.00	23	47	45	69	48	92															
	6	52.50	81.60			32	61	54	83	77	106													
	7	61.25	95.20					41	75			63	97	86	120									
	8	70.00	108.80							50	89	72	111	95	134									
	9	78.75	122.40									59	102	81	125	104	148							
	10	87.50	136.00											68	116	90	139	113	162					
	11	96.25	149.60													77	130	99	153	122	175			
	12	105.00	163.20														86	144	109	167	154	212		



Control pressure

Control pressure: 2 - 8bar
Control medium/
quality: Filtered air minimum acc.
to DIN/ISO 8573-1 Class 4

Weight, air consumption

Actuator type	AGDL	AGDL	AGS
Weight (kg)	5.80	5.40	6.60
Volume (l) Double-stroke	2.00	1.80	0.85

Switch time (sec*)

AGDL	AGDS	AGS	
		0 - 90°	90 - 0°
1.2	1	1.1	1.0

Ambient temperature

Standard	- 35°C to +80°C
High-temp (HT)	- 15°C to +140°C
Low-temp (TT)	- 50°C to +70°C

Optional extras

- Other housing coatings
- Pinion: Stainless Steel AISI 304 or 316
- 180° actuator: rotation 180° to 120° adjustable
- 3 - position actuator: 0° - 90° - 180° / 0° - 45° - 90°

*Quoted switch times are guidelines for a double-stroke at 5 bar control pressure and at 50% rated loading. With high valve actuating speeds, potentially dangerous large braking forces can arise in the actuator end positions. Tip: Throttle the exhaust air or select a larger actuator. Single Action actuators with 12 springs.

Ordering code

AGDL - 045 / 090 - V22 - H
AGDS - 045 / 090 - V22 - H
(see assembly variants)
AGS - 045 / 090 - 06* - V22 - H
(see assembly variants)
*The number of springs (4 up to 12pcs.) must be matched to the control pressure beforehand
AGDL = Double acting with spring end caps
AGDS = Double acting with short end caps
AGS = Single acting with spring

Materials

- Housing: Al-alloy, anodised
- Caps: Al-alloy, PP-coated
- Piston: Al-alloy
- Pinion: Al-alloy, hard-anodised
- Namur shaft: SS304
- Seals: NBR (Perbunan)
- Bearing: Plastic, POM
- Screws: Stainless steel 1.4301